

TOUCHING BASE

MONTHLY NEWSLETTER

April 2023



ACCESS TO CLEAN WATER FOR THE OKANAGAN INDIAN BAND!!

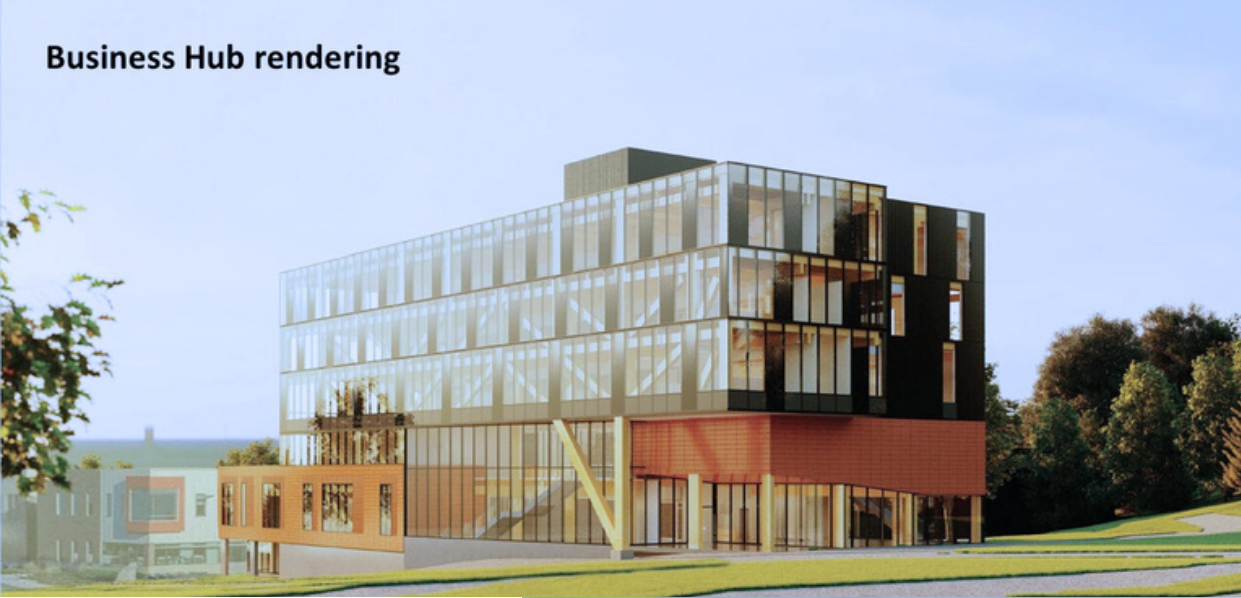
The Okanagan Indian Band (OKIB) celebrated the successful completion of their project to upsize and modernize the Six Mile and Bradley Creek systems near Vernon, British Columbia. The project site is located on the traditional and unceded territory of the Syilx Okanagan and Secwepemc Peoples.

For the first time in Canada, a First Nation used an Integrated Project Delivery (IPD) model to complete work on an infrastructure project for their community. This project included the following team members: OKIB, Urban Systems Ltd., and the Bird-Dawson Joint Venture. The water system improvements have helped bring clean drinking water to more residents in the community.

Watch the video [HERE](#) to find out more!

PROJECT UPDATES ISSUE:

- Okanagan Indian Band
- CNL New Builds
- The Canadian Canoe Museum
- St. Lorenzo Ruiz Middle School
- CNL's Advanced Nuclear Material Research Centre
- IPD Industry Reads
- Welcome New Members
- Buddy Campaign
- March Webinar Recap
- Upcoming Events



FROM RENDERING TO FRUITION



CNL NEW BUILDS & MASS TIMBER

Updated drone photos were shared of the construction of the new Science Collaboration Centre at Canadian Nuclear Laboratories. This six-story tall building will include office space and meeting rooms for approximately 450 employees, a new CNL Data Centre with S&T computing capabilities, a university-style auditorium with 200 theatre-style seats, a welcoming Library space, and a rooftop terrace.

This building is part of a \$1.2 billion federal government investment for new and renewed science and site support infrastructure at the Atomic Energy of Canada (AECL) owned CNL site and is expected to be complete by the Spring of 2023. IPDA member companies include HDR, LEA Group, Jp2g Consultants Inc., M. Sullivan & Son Limited (Sullivan), Chandos Construction, and Canadian Nuclear Laboratories.

This building is one of three constructed using the renewable resource of mass timber. Be sure to check out the CNL video: Why wood? CNL's choice to use mass timber in New Builds suite of projects on their YouTube, LinkedIn, and Facebook social media channels. CNL is an IPDA Owners Member.

Those wishing to view the video on YouTube can do so [HERE](#).

THE CANADIAN CANOE MUSEUM

"It is an exciting time for the Canadian Canoe Museum. A little more than a year ago, we had just begun construction. Since then, we've achieved many milestones. The building structure has come to life before our eyes, the mass timber façade is taking shape and the building is nearly closed in. Exhibits have been developed and are being sent to fabrication, the fundraising campaign is in its final stretch and the collection is nearly ready for its move across town," exclaims Carolyn Hyslop, Executive Director.



Exciting progress has been made on the new museum. In addition to erecting the last of the Douglas fir mass timber structure, the spruce cross-laminated timber (CLT) panels have been installed on the roof and walls.

NEW YEAR, NEW MUSEUM

These gorgeous warm wood panels will be visible from many locations in the new museum, including the atrium, Silver Bean Café on the Lake, and the library and archives upstairs, for all guests to experience and enjoy!



The Canadian Canoe Museum in Peterborough, Ontario includes IPDA member companies Lett Architects Inc. LEA Group, and Chandos Construction. Other team members include Engage Engineering, Lancer Electric, Kelson, D. G. Biddle & Associates, Basterfield & Associates Inc., and JHG Consulting Network Inc. Timmerman Timberworks Inc. has joined the team for the installation of the mass timber.



ST. LORENZO RUIZ PRINCIPAL MEETS FUTURE STUDENTS

ST. LORENZO RUIZ MIDDLE SCHOOL, RED DEER CATHOLIC REGIONAL SCHOOLS

Owner's representative: Red Deer Catholic Regional Schools that is a publicly funded school board located in Central Alberta, has undertaken its fourth IPD project - St. Lorenzo Ruiz Middle School. Construction of this 700-student middle school with an area of 6,640m² has progressed with the construction phase well underway. The project remains on schedule and on budget with the school set to open for students in September 2023.



IPDA member companies on this project include Group2 Architecture, Mechwave Engineering (now WSP Mechanical), AltaPro Electric, and RJC Engineers. Additional companies on the IPD Team include Red Deer Catholic Regional Schools, Clark Builders, World Class Contracting, Collins Steel, and KERR Interior Systems.

Principal, Mr. Rob Coumont, had the chance recently to meet some future St. Lorenzo Ruiz students. The students from St. Teresa of Avila School shared some great ideas about what is important in a school and what they would like to experience at St. Lorenzo Ruiz Middle School. Principal Rob has also been instrumental in providing updates on the project's progress with the aptly titled "Ruiz Report" videos on YouTube.

Those wishing to follow along can do so [HERE](#).



A BIG ROOM IN THE FIELD



CNL'S ADVANCED NUCLEAR MATERIAL RESEARCH CENTRE (ANMRC)

Owner's representatives Canadian Nuclear Laboratories (CNL) major undertaking of the Advanced Nuclear Materials Research Centre (ANMRC) project has transitioned in 2023 to implementation in the field. On March 1, the team kicked off their first meeting in their new home, transitioning from a collaborative space in Kanata during the Validation Phase to these "Big Room" trailers on the Chalk River Laboratories site.

Here all involved in the project, from CNL representatives to contractors, tradespeople, customers, and end users, will work collaboratively to discuss the project as a whole. Everything from the schedule, to cost, to what needs to be included in the facility is discussed openly at these meetings ensuring that the entire team is included and that there is ample opportunity for communication across the project.

"Face time on a project of this size and complexity requires the whole team to be together, co-location really drives a collaborative culture and after the hibernation due to COVID, we are firing on all cylinders," said Jared van de Ligt, Construction Manager with the Chandos-Bird-Sullivan (CBS) – the lead contractor on the ANMRC project.

IPDA members include Owner Member: CNL; Professional Members: Jp2g Consultants, RJC Engineers, and Merrick & Company; and Contractor Members: M. Sullivan & Son Construction, Bird Construction, and Chandos Construction.

Read more about the ANMRC groundbreaking on the AECL website [HERE](#).

Read more about the ANMRC on the CNL website [HERE](#).

IPD INDUSTRY READS

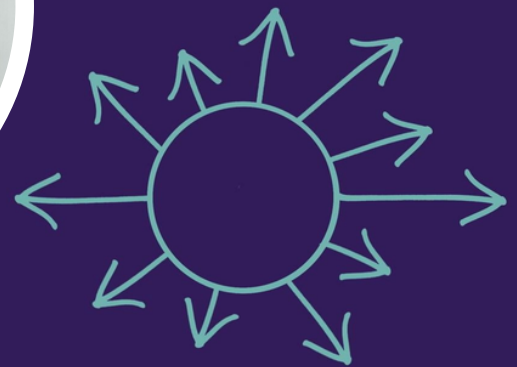
Choosing By Advantages (CBA) is a game-changer. It useful at home, at work and anywhere else decisions are made. It helps families align on decisions delivering better outcomes. It enables project teams to think through and align on better decisions and work products for their customers, delivering increased value. It helps organizations make better decisions for their employees and for their customers. When CBA is executed properly and facilitated correctly, all stakeholders can understand why specific decisions were made.

This book is a clear, concise explanation of how to use Choosing By Advantages Sound Decisionmaking. It explains the underlying concepts, the vocabulary, the most frequently used methods, as well as some of the keys to successful facilitation for better group decisions. This book should be on everyone's shelf!



What is Choosing By Advantages?

Choosing By Advantages (CBA) is a decisionmaking system developed by Jim Suhr in 1986 while he was working for the US Forest Service. Underpinning the system is the Fundamental Rule - "Decisions must be based on the importance of advantages." The CBA system includes definitions, models, and principles, in addition to tools, techniques, and methods of decisionmaking. There are methods for all types of decisions, from the simplest to the most complex. Sound decisionmaking, the foundation of the CBA system and the topic of this book, is a collaborative and transparent way to make decisions amongst any group of stakeholders.



Choosing By ADVANTAGES

How to Make Sound
Decisions

Rebecca Snelling
Foreword by Jim Suhr

NEW NEWSLETTER FEATURE!!

Author Rebecca Snelling is a Certified Instructor for the Lean Construction Institute (LCI) courses.

To find out more about Rebecca visit www.rebeccasnelling.com

NEW IPDA MEMBERS

Welcome to the following new members. The IPDA welcomes companies from every stakeholder sector across the design and construction industry: owner, contractor, architect, trade contractor, consultant, supplier, insurer, etc. It is through acting together that we can best create solid foundations for collective success.



IPDA PRACTITIONERS FORUM BRING A BUDDY CAMPAIGN

Would you like a chance to introduce IPD to colleagues whose companies are not members of the IPDA?

We would like to encourage IPDA Members who attend the Member Practitioner Forum to “Bring a Buddy”.

If you know someone from a non-member organization who would like to gain a better understanding of what IPDA membership has to offer, bring them along to one of the Member Forums. Just send their name and email to info@ipda.ca, we will get them registered to attend.



Webinar presented by:



Brent Willett
Supply Chain Canada
Alberta Institute



Aura Robinson
ISL Engineering



Brent Gould
Sullivan Construction



IPDA Webinar Series: Emerging Issues

March 16, 2023
9 - 10:30 am (MST)
11 am - 12:30 pm (EST)

Webinar moderated by:

Craig Webber
Group2



MARCH WEBINAR RECAP

A HUGE thank you to the moderator, participants, and all those who registered to attend the March 2023 IPDA webinar on Emerging Issues. Past IPDA President Craig Webber was a wonderful moderator and there was a lot of fantastic discussion with panelists Brent Willett of Supply Chain Canada Alberta Institute, Aura Robinson of ISL Engineering, and Brent Gould of Sullivan Construction.

The content and additional Q&A from this webinar will be available as a recording in the near future for members who were not able to attend the webinar. Should you wish to access the members-only content on the website reach out to get more information on how your organization can become a member of the IPDA. Visit our website or click [HERE](#) and fill out the form. Once your company becomes a member all employees will receive access to our members-only content. It is one of the many benefits of membership in the IPDA.

STAY TUNED TO IPDA SOCIAL MEDIA FOR UPDATES
ON FUTURE WEBINARS & OTHER EVENTS
FOLLOW US ON FACEBOOK [HERE](#) AND LINKEDIN [HERE](#).

TO SUBSCRIBE TO THIS NEWSLETTER AND
ALL IPDA UPDATES PLEASE SCAN THE QR CODE
AND FILL OUT THE FORM.



UPCOMING EVENTS MAY 2023

- IPDA Practitioner's Forum - An IPDA Members Only Event
Friday, May 5th, 2023
9:00 am - 10:30 am (MST)
11:00 am - 12:30 pm (EST)
- Symposium - Conférence PMI Montréal
May 9-10, 2023
In-person Event - registration required <https://www.pmimontreal.org/>
- IPDA Webinar Series: Linear Construction
Thursday, May 11th, 2023
9:00 am - 10:30 am (MST)
11:00 am - 12:30 pm (EST)

Remember, your IPDA Membership is organization-wide – don't forget to share IPDA news & updates with your colleagues!

MORE INFO ON IPDA EVENTS GO HERE: www.ipda.ca

LET'S SHOWCASE WORK IN PROGRESS IPD PROJECTS

The IPDA wants to share the exciting progress of IPD projects from our membership currently underway across Canada. Help us showcase your project on the IPDA LinkedIn and Facebook pages. We would love to see updates, photos, and the current progress of your work.

We want to include your IPD project updates on our LinkedIn and Facebook pages as part of our #WorkInProgressWednesday features.

Send your project progress and updates to comm@ipda.ca including:

- Your contact information
- Name & location of the project
- IPDA members associated with the project
- Any photos (that have been approved for distribution)
- Link to any media story, blog, or anything else from your company's marketing department that we can share

